

# NETELY®

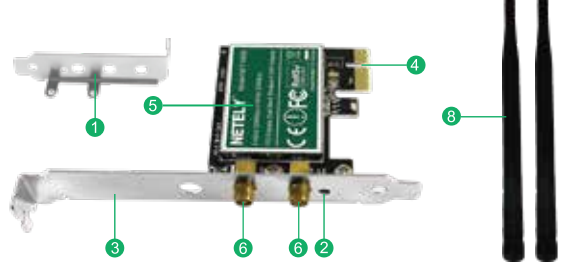
## Dual Band PCIE WiFi Adapter

Model : NET-N600 NET-N900

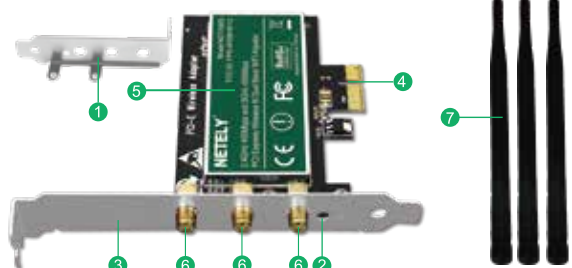
Official Site: [www.netely.com](http://www.netely.com) Support: [support@netely.com](mailto:support@netely.com)

1

### NET-N600 IEEE 802.11 N 600Mbps PCIE WiFi Adapter 2.4GHz 300Mbps and 5GHz 300Mbps.



### NET-N900 IEEE 802.11 N 900Mbps PCIE WiFi Adapter 2.4GHz 450Mbps and 5GHz 450Mbps.



- 1 Low profile bracket
- 2 Activity indicator
- 3 Full height bracket
- 4 PCIE X1 interface
- 5 Shield cover
- 6 SMA connector
- 7 3X 3dBi WiFi antennas

2

### NET-N600 Product Description:

NET-N600 is a wireless N dual band 2x2 MIMO PCIE WiFi adapter. It is selected by Qualcomm Atheros AR9XXX 2T2R MIMO platform high power solution that will improve wireless network connection stability. With added power amplifier on each antenna chain and 3dBi X2 external antennas make sure wireless network receiving(RX) or transmitting(TX) in great condition. The desktop PCs and working stations will get a 300Mbps max speed on 2.4GHz or 5GHz in long range for video streaming, online gaming, VOIP calls etc. Comply with WEP, WPA/ WPA2/ WPA-PSK/ WPA2-PSK (TKIP/AES), will protect users network privacy. Coming with full height bracket and low profile bracket will work on both standard size PCs and slim PCs. Based on PCI Express X1 hardware interface will work on mother board PCIE X1, X2, X4, X8, X16 slot.

#### Compatible system:

1. Linux system: ATH9K driver.
2. Windows systems: plug and play on Windows 11,10.8.1.8 (32/64bit) and Windows Server 2012,2012R2,2016,2019, 2022(32/64bit).Need to install driver on Windows XP,Vista,7 (32/64bits) and Windows Server 2003,2003R2,2008, 2008R2(32/64bit).

#### Package list:

- 1X NET-N600
- 1X User manual
- 1X Low profile bracket
- 2X WiFi antennas
- 1X Mount-screw

3

### NET-N900 Product Description:

NET-N900 is a wireless N dual band 3x3 MIMO PCIE WiFi adapter. It is selected by Qualcomm Atheros AR9XXX 3T3R MIMO platform high power solution that will improve wireless network connection stability. With added power amplifier on each antenna chain and 3dBi X3 external antennas make sure wireless network receiving(RX) or transmitting(TX) in great condition. The desktop PCs and working stations will get a 450Mbps max speed on 2.4GHz or 5GHz in long range for video streaming, online gaming, VOIP calls etc. Comply with WEP, WPA/ WPA2/ WPA-PSK/ WPA2-PSK (TKIP/AES), will protect users network privacy. Coming with full height bracket and low profile bracket will work on both standard size PCs and slim PCs. Based on PCI Express X1 hardware interface will work on mother board PCIE X1,X2, X4,X8,X16 slot.

#### Compatible system:

1. Linux system: ATH9K driver.
2. Windows systems: plug and play on Windows 11,10.8.1.8 (32/64bit) and Windows Server 2012,2012R2,2016,2019, 2022(32/64bit).Need to install driver on Windows XP,Vista,7 (32/64bits) and Windows Server 2003,2003R2,2008, 2008R2(32/64bit).

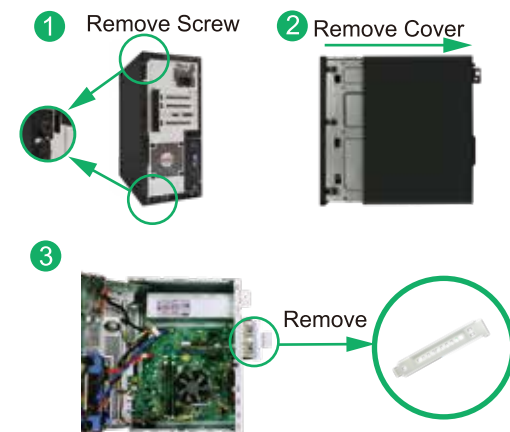
#### Package list:

- 1X NET-N900
- 1X User manual
- 1X Low profile bracket
- 3X WiFi antennas
- 1X Mount-screw

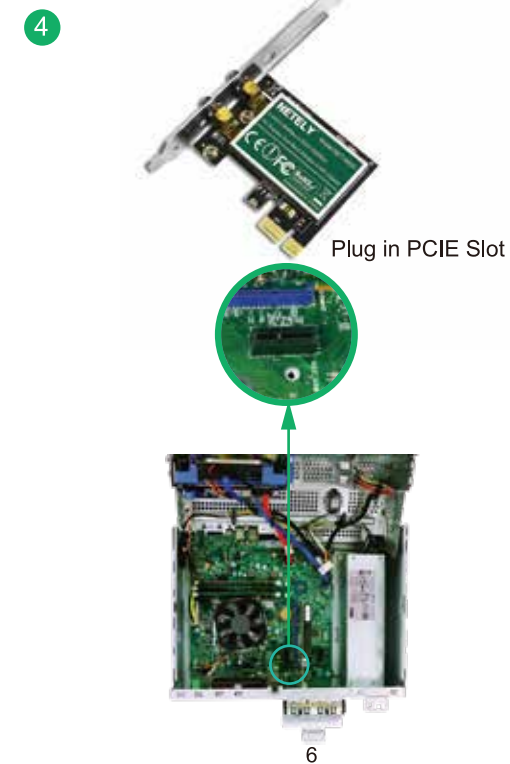
4

### Install WiFi Adapter Hardware on PCs:

Step 1. Switch OFF, unplug computer from main socket, unplug power-cord and other connected peripheral devices. Remove PC case cover.

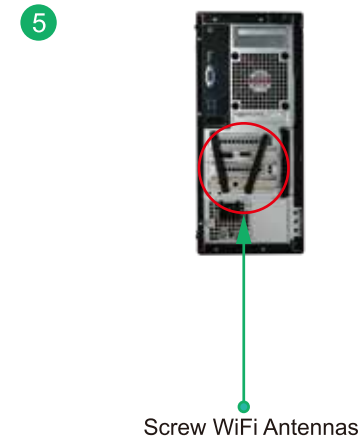


5



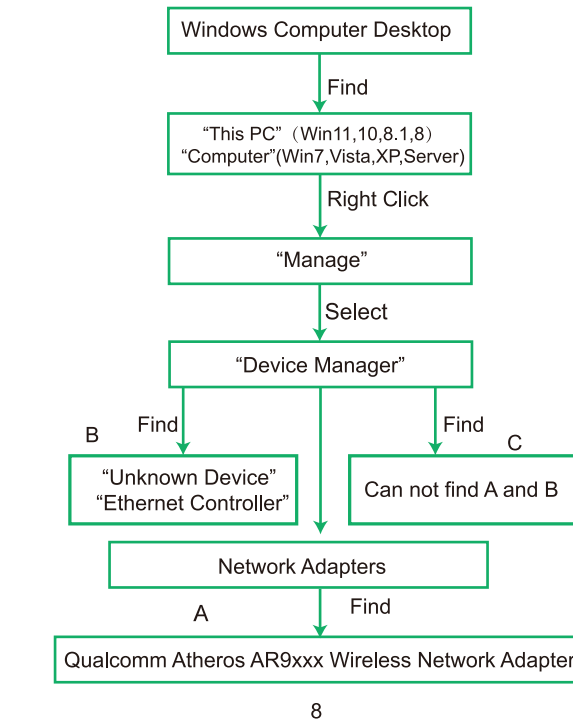
6

Step 3. Screw the antennas directly to wireless network card. If needed, the antennas can be adjusted and face to wireless AP's direction. It will improve the wireless network reception. Then reattach the PCs cover, put back all connected devices and turn on computer.



7

### Check if PCs Detected WiFi Card:



8

A.Can find "Qualcomm Atheros AR9xxx Wireless Network Adapter" in "Windows Device Manager-Network Adapters" Means users can use wireless network now. (Windows 11, 10.8.1.8,Server 2012,2012R2,2016,2019,2022 32/64bit).  
B.Can't find "Qualcomm Atheros AR9xxx Wireless Network Adapter", but PC can find a "Ethernet Controller" (Unknown Device) in "Windows Device Manager-Other Device". Means users have assembled this card on PCs correctly. And PC have detected hardware, need to install drivers. Please install drivers on Windows 7,XP,Server 2008, 2008R2,2003,2003R2.  
C.Can't find A and B, means user did not put on this wifi card well on PC. Or this PCIE slot is not active. We suggest user change to another PCIE slot and plug it again. Or just remove and re-plug it back.

### Install Driver on Desktop PCs

- 1.NET-N600 and NET-N900 are based on Qualcomm Atheros WiFi adapters serial, these models share the same Windows and Linux driver.
- 2.Windows XP,Vista,7(32/64bits) and Windows Server 2003, 2003R2,2008,2008R2(32/64bit) system and Linux system users please visit our site [www.netely.com](http://www.netely.com) to download Windows and Linux system driver.
- 3.Windows 11,10.8.1.8 (32/64bit) and Windows Server 2012,2012R2,2016,2019,2022(32/64bit) systems support plug and play.

9

**Step1.** Download driver pack "Atheros Wireless N Networks" from our site. Release the ZIP file, open the file folder and find the "setup.exe".

**Step2.** Double right-click the software and running the software.

1. Double right-click.



setup.exe

2. Select language.



10

7. Click "Finish". Then start using new WiFi adapter.

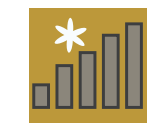


**Step3.** Connect to internet.

1. Locate the task bar in the bottom right corner of PC's desktop.
2. Select the wireless icon as below on Windows system.



Windows 10



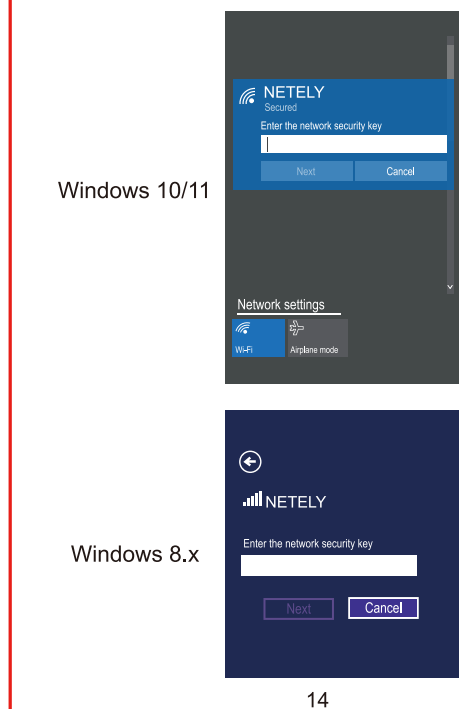
Windows 8.x



Windows 7

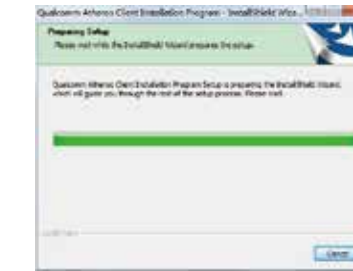
13

3. Select the WiFi signal, fill correct password and connect to it. Afterwards enjoy fast internet.



14

3. Waiting for the preparation files ready.



4. Click "Next".



11



### User FAQs:

#### 1. Why can't this card connect to 5G or can't find 5G signal on my PC?

PCs find 5GHz signal but can't connect: 1. Connect to 2.4G first, make sure it is connected. Then Find your 5G signal and connect, most of them will work. PCs cannot find my 5G signal but 2.4G works: 1. Connect 2.4G signal first. 2. Restart PC or re-plug this wireless card. Or in Device Manager-Remove this card and install driver again for it. Then PCs will find 5GHz and will allow PCs connect.

#### 2. Why does my PC always get poor signal or drop sometimes?

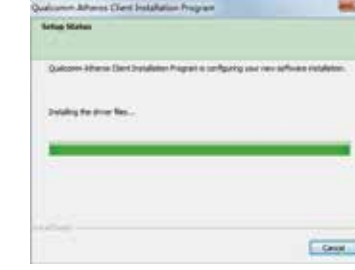
A. Test Wi-Fi signal in PC area (same spot, same height) by cell phone, check if PC was placed in a Wi-Fi dead zone, if yes, please change location for PCs.  
B. If the distance is a little far, PCs will get poor signal or only 2.4G signal. To improve this, please consider changing the PCs or Wireless AP's location. Or you can buy a more power Wi-Fi antenna for this WiFi card.

15

5. Accept the license.



6. Waiting for program installation.



12

3. Why does my PC find 2.4G signal only?  
PCs was placed too far away from Router. 5GH band will support higher data speed, but with narrower coverage. Wireless AP or Router's signal may not reach PCs location. Consider decreasing the distance between Router and PC.

#### 4. I am a Linux user where can I get source code to compile on my PC?

Visit our site [www.netely.com](http://www.netely.com) to download ATH9K driver.

#### 5. Windows 11,10.8.1.8 system cannot load this card automatically, how to fix this?

We suggest users remove this card and put it in another PCIE slot. If PCs do not have other PCIE slot, please open PCs BIOS setting, find this PCIE slot and open its function.

#### 6. My PCs find few signals only, not as expected, how to fix this?

Please remove WiFi card from PCs and install it again. At the same time please screw WiFi antenna and make sure it is screwed correctly. Most of time it is WiFi antenna that wasn't screwed properly.

#### 7. Does it work on my PCIE X16 slot?

Absolutely YES, Works on PCIE X1, X4, X8,X16 slot.

#### 8. Where can I find support from NETELY?

Get prompt tech-support: [support@netely.com](mailto:support@netely.com)

16