

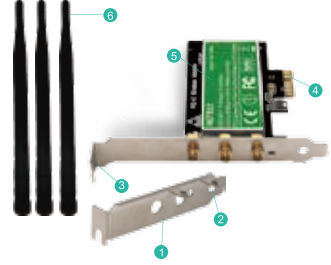
NETELY

IEEE 802.11 N PCI Express Wireless Network Adapters

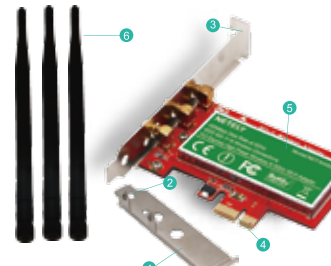
Model : •NET-N900 •NET-N450B

Official Site:www.netely.com Tech-support:support@netely.com

NET-N900 IEEE 802.11 N 3X3 MIMO PCI Express Wireless Dual Band 2.4GHz or 5GHz 450Mbps Network Adapter



NET-N450B IEEE 802.11 N 3X3 MIMO PCI Express Wireless 5GHz 450Mbps Wi-Fi Adapter



- 1 Low profile bracket
- 2 Activity Indicator
- 3 Standard profile bracket
- 4 PCI express interface
- 5 Heat sink
- 6 3 X6dBi Antenna

NET-N900 Product Description

NET-N900 is a high power PCI Express Wireless Adapter; Select by Qualcomm Atheros Network Solution; Offers super speed and stable wireless connection on PCs, Working stations by on board PCI Express Slot. Allow connected device get a max 450Mbps throughput data speed on 2.4 GHz or 5GHz. It's a easy and low cost way to add desktop PCs or Working Stations on Wireless for internet surfing, file downloading, online gaming and HD video streaming.

NET-N900 Product Tech Data:

Power consumption: 2.85Watts
 Wireless Signal: 3x3 802.11n 3-Stream MIMO
 Compatible PCs: Standard PC and Mini Size PCs
 Max Wi-Fi Speed: 2.4GHz 450Mbps or 5GHz 450Mbps
 Antennas: 3X6dBi external detachable dual band antenna
 Working Mode: Wi-Fi Adapter (Receiver) and Wireless AP
 Wireless Standard: IEEE802.11N, backward compatible a/b/g/ ac
 Hardware Interface: PCI-E 2.0 X1, Works on PCIE X1, X4, X8, X16 slot

NET-N450B Product Description:

NET-N450B is a wireless N 5.8GHz ONLY 3x3 MIMO (3-Stream) High Power PCI Express (PCI-E) Wi-Fi Adapter. Select by Qualcomm Atheros AR9580 3T3R MIMO platform high power Wi-Fi solution improve wireless connection stability. With added power amplifier on each antenna ports and 3X 6dBi external antennas make sure wireless network

receiving(RX) or transmitting(TX) in great condition. PCs and Working Stations will get a 450Mbps max throughput speed in long range, few loss for video streaming, online gaming, VOIP calls etc. **Note: NET-N450B works on 5.8GHz only.**

NET-N450B Technical Data:

Power consumption: Max 3.0Watts.
 Operating Channel: 5.150-5.850 GHz
 Wireless Connection Speed: Max 450Mbps
 Transmit output: 18dBm X3+6dBi X3 Antennas
 Network Privacy: Comply with WEP, WPA /WPA2/WPA-PSK/ WPA2-PSK (TKIP/AES)
 Wireless Standard: IEEE 802.11A/N, support IEEE 802.11 A/N/AC routers, APs, ISPs etc
 Receive Sensitivity: HT40/MCS-7 -68 dBm/MCS-0 -89 dBm (On board) +6dBi X3Antennas

NET-N900&NET-N450B Supported System :

Linux System:ATH9K Driver
 Windows 10,Windows 8.1,Windows 8 (32/64bit) no need to install driver. WindowsServer/Windows XP/Windows 7(32/64bits)need to install driver .

NET-N900&NET-N450B Package List:

- 1X PCIE wireless network Adapter; 1X Mini CD
- 1X Low profile bracket; 3X 6dBi Antenna
- 1X User Manual; 1X Mounting Screw

Analytical Note :

- Can find"Qualcomm Atheros ARXXXXXX Wireless Network Adapter"means Works Correctly no need to install driver anymore. Can connect to internet directly as you wish.(Windows 10,Windows8.1,Windows8(32/64bit)
- Can't find "Qualcomm Atheros ARXXXXX Wireless Network Adapter" or PC can find it in a yellow triangle. Or PC can find a "Ethernet Controller"(Unknown Device) under Other Device in Device Manager. Means users have assembled this card on PCs correctly.And PC have found it,but lack driver on users PCs. Please install drivers in Mini CD. (Windows 7,Server,XP)
- Can't find"Qualcomm Atheros ARXXXXXX Wireless Network Adapter", can't find" Ethernet Controller (unknown device)"under Other Device in Device Manager. Means you were not put the Wi-Fi card to PCI Express Slot correctly. Need to re-plug Wi-Fi adapter or change it to another PCI Express slot and check again.

Software Installation

Note : Most of Windows 10, 8.1,8 systems do not need any driver if equipped with Windows original system. If system is unable to read Wi-Fi adapter, please refer to the driver installation steps as below.

The software for each system are using same operating panel, but build in different driver files.

Preparation :

- If computer have CD RAM,please use mini CD find file named "Atheros Wireless N Networks" directly start up driver.
- If computers can not read CD please try to download correct driver from our site www.netely.com or contact us at support@netely.com
- NET-N900 and NET-N450B are Qualcomm Atheros Wireless N adapters share same driver and same install steps as below.

Install Driver Software on Windows 10,8.1,8,7,Windows Server and XP (32/64bit) System:

Note : This driver installation steps works for Windows10, 8.1, 8, 7 ,Windows Server and XP (32/64bit)

Steps1.Follow steps and find correct software version on mini CD or Downloaded software pack:



Steps2. Double right-click the software and running the software.

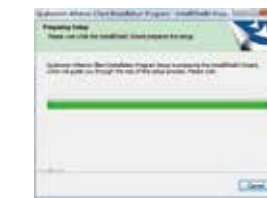
- Double right-click



- Select language



- Waiting for preparation files ready.



- Click "Next"

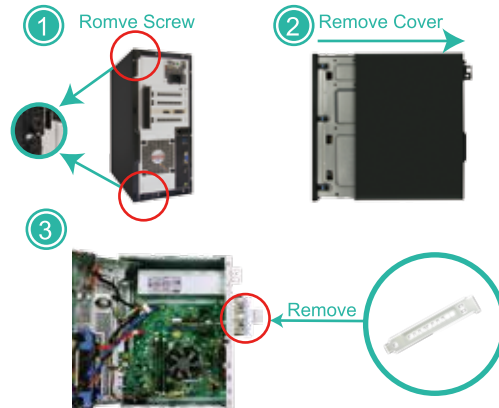


- Accept the license.

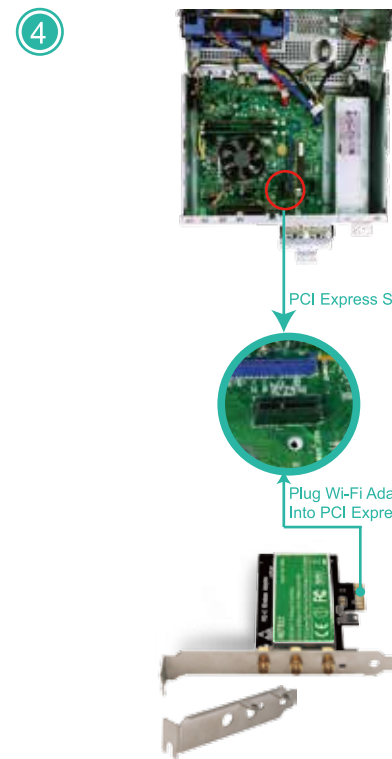


Assemble Wi-Fi Adapter to Desktop Computers:

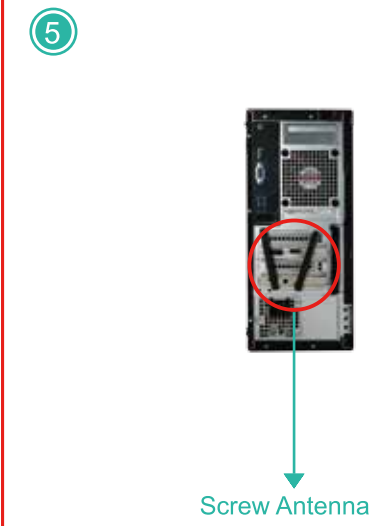
Step1. Switch OFF, unplug your computer from the main socket, unplug the power cord and other connected peripheral devices. Remove the cover from computer's case.



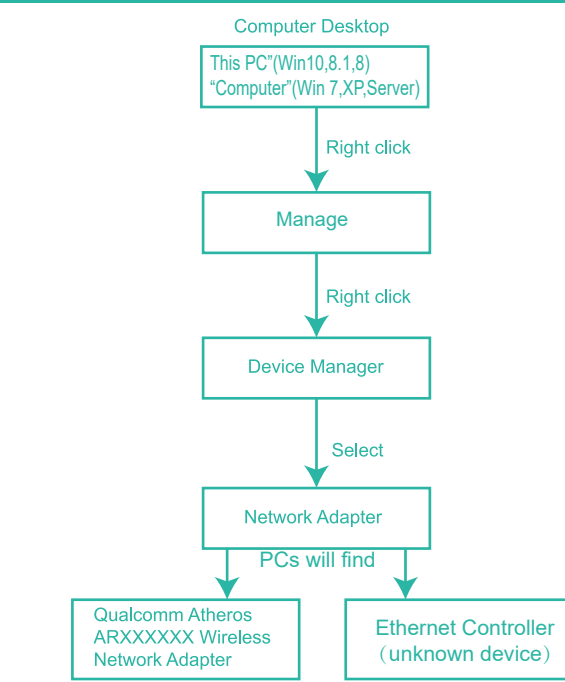
Step2. Find the correct PCI Express Slot ,Insert the wireless network card into an empty PCI-E slot of the motherboard.



Step3.Screw in the antennas included directly to wireless network card. Note: If needed Position of the antennas can be adjusted to improve wireless reception. Reattach the cover of computer case, turn on computer.



Find the Wi-Fi adapter on computers, check if the Wi-Fi adapter assembled properly:



6.Waiting for program installation



7.Click "Finish", and using the new wireless network card.

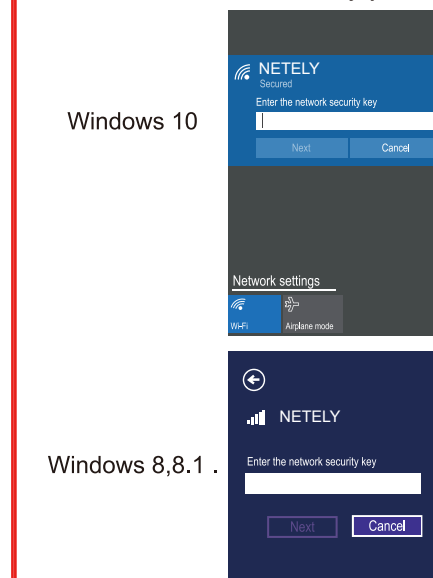


Step3. Connect to internet:

- Locate the task bar in the bottom right corner of your desktop.
- Select the Wireless icon as below on each system.



- Select the Wi-Fi signal, fill correct password and connect to it. Afterwards enjoy fast internet.



Windows 7



Trouble Shooting Analyze:

1. Why this card can't connect to 5G or PCs can't find 5G signal on my PC?

PCs find 5GHz signal but can't connect: 1.Connect to 2.4G first, make sure it is connected .2. Find your 5G signal and connect, most of them will work. PCs cannot find my 5G signal but 2.4G works: 1.Connect 2.4G signal first. 2. Restart PC or re-plug this Wireless card. Or in Device Manager-Remove this card and install driver again for it. Then PCs will find 5GHz and will allow PCs connect.

2. Why my PCs always get poor signal or drops sometimes?

A. Test Wi-Fi signal in PC area(same spot, same height) by cell phone check if PC was placed in a Wi-Fi dead zone if yes, please change location for PCs.
 B. If the distance little long PCs will get poor signal or only 2.4G signal. To improve this please considers change the PCs or Wireless AP's location. Or you can buy a more power Wi-Fi Antenna for it.

3. Why my PC find 2.4G signal only?

PCs was placed too far away from Router.5GH band will support more data speed by covers a small area. Wireless AP or Router's signal may cannot reach PCs location. Considers decrease the distance between Router and PC.

4. I am a Linux user how can I get source code to compile my PC?
 Go to open the mini CD in the package find ATH9K links get source code online. Or go to our site download ATH9K driver.

5. Windows10,8.1,8 system cannot load this card automatically how to fix this ?
 Just need to install the drivers in mini CD, device will works properly. If do not have CD ROM, please go to our site download drivers for the models in your hand.

6. My PCs find few signals only, not as expected performance, how to fix this?

Please remove Wi-Fi card from PCs and install it again. At the same time please screw Wi-Fi antenna and make sure it is screwed correctly. Most of time it is Wi-Fi antenna wasn't screwed properly.

7. There a PCIE X16 port only,is it working on this ?

Absolutely YES,Works on PCIE X1, X4, X8, X16 slot.

8.Where I can find support from NETELY ?

Get prompt tech-support:www.netely.com or support@netely.com