

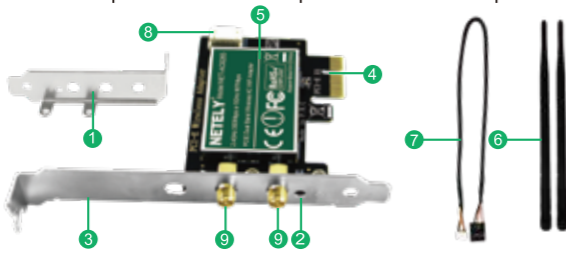
NETELY®

### Wireless-AC PCIE WiFi Card

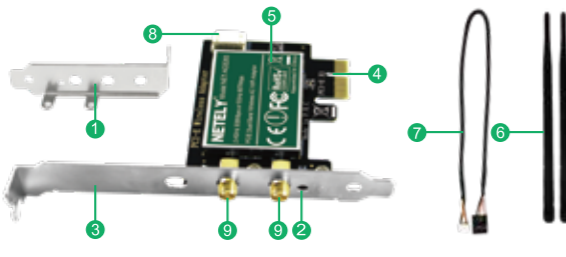
NET-AC8260 NET-AC8265  
Support:support@netely.com Official Site:www.netely.com

1

**NET-AC8260** IEEE 802.11AC 1200Mbps PCI Express Wireless Network Adapter-2.4GHz 300Mbps and 5GHz 867Mbps.



**NET-AC8265** IEEE 802.11AC 1200Mbps PCI Express Wireless Network Adapter-2.4GHz 300Mbps and 5GHz 867Mbps.



- 1 Low profile bracket
- 2 Activity indicator
- 3 Full height bracket
- 4 PCI-E interface
- 5 Shield cover
- 6 2X 3dBi Wi-Fi antennas
- 7 USB 2.0 cable
- 8 USB 2.0 connector
- 9 SMA connector

2

### NET-AC8260 Product Description:

**NET-AC8260** is based on Intel's Wireless-AC 8260NGW WiFi module. It supports IEEE 802.11AC WiFi 5 technology, provides dual band WiFi connection for desktop computers on 2.4GHz 300Mbps and 5GHz 867Mbps. It is a cost-effective way to add wireless network adapter and WiFi audio adapter on PCs and servers for online gaming and HD video streaming.

### Product Technical Data:

WiFi Module: Intel Wireless-AC 8260NGW  
Operation Frequency: 5GHz and 2.4GHz  
Wireless Signal Type: IEEE 802.11AC WiFi 5  
Wireless Technology: TX Beamformee and MU-MIMO  
Compatible PCs: Full Height and Slim Size Desktop PCs  
Working Mode: Wi-Fi Adapter (Receiver) and Wireless AP  
Max Wi-Fi Speed: 2.4GHz 300Mbps, 5GHz 80MHz 867Mbps

### System Requirements:

Need to compile on Linux Kernels 4.1+  
Need to install WiFi network and WiFi audio driver on Windows 11,10,8,x 64bit and Windows 7(32/64bit) system

### Package List:

- |                  |                        |
|------------------|------------------------|
| 1X NET-AC8260    | 1X Mini CD             |
| 1X User Manual   | 1X Mounting Screw      |
| 2X 3dBi Antennas | 1X Low Profile Bracket |
| 1X USB 2.0 Cable |                        |

3

### NET-AC8265 Product Description:

**NET-AC8265** is based on Intel's Wireless-AC 8265NGW WiFi module. It supports IEEE 802.11AC WiFi 5 technology, provides dual band WiFi connection for desktop computers on 2.4GHz 300Mbps and 5GHz 867Mbps. It is a cost-effective way to add wireless network adapter and WiFi audio adapter on PCs and servers for online gaming and HD video streaming.

### Product Technical Data:

WiFi Module: Intel Wireless-AC 8265NGW  
Operation Frequency: 5GHz and 2.4GHz  
Wireless Signal Type: IEEE 802.11AC WiFi 5  
Wireless Technology: TX Beamformee and MU-MIMO  
Compatible PCs: Full Height and Slim Size Desktop PCs  
Working Mode: Wi-Fi Adapter (Receiver) and Wireless AP  
Max Wi-Fi Speed: 2.4GHz 300Mbps, 5GHz 80MHz 867Mbps

### System Requirements:

Need to compile on Linux Kernels 4.6+  
Need to install WiFi network and WiFi audio driver on Windows 11,10,8,x 64bit and Windows 7(32/64bit) system.

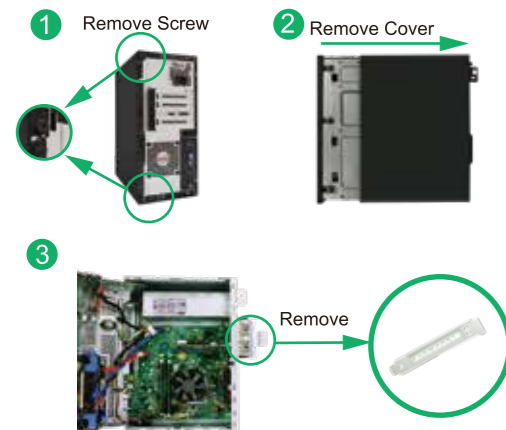
### Package List:

- |                  |                        |
|------------------|------------------------|
| 1X NET-AC8265    | 1X Mini CD             |
| 1X User Manual   | 1X Mounting Screw      |
| 2X 3dBi Antennas | 1X Low Profile Bracket |
| 1X USB 2.0 Cable |                        |

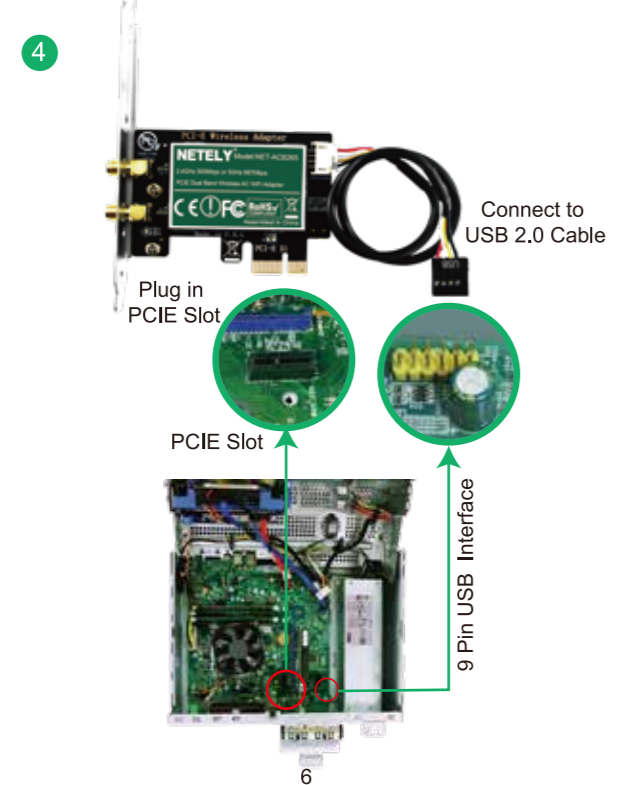
4

### Install WiFi Adapter Hardware on PCs:

Step 1. Switch OFF, unplug computer from main socket, unplug power-cord and other connected peripheral devices. Remove PC case cover.



5



6

Step 3. Screw the antennas directly to wireless network card. If needed, the antennas can be adjusted and face to wireless AP's direction. It will improve the wireless network reception. Then reattach the PCs cover, put back all connected devices and turn on computer.

5



Screw WiFi Antennas

7

### How to get latest driver?

- If PCs have CD-ROM, please use Mini CD directly and follow the steps as below to complete the driver installation for Windows and Linux system.
- Get driver from [www.Intel.com](http://www.Intel.com), search "Wireless-AC 8260N -GW" or "Wireless-AC 8265NGW", download driver for PCs.

### Select best way to install driver:

NOTE: NET-AC8260 and NET-AC8265 share the same driver on Windows 11,10,8,x 64bit and Windows 7(32/64bit) system.  
1. If your PC is online, please visit [www.intel.com](http://www.intel.com) and search "Wireless-AC 8260NGW" or "Wireless-AC 8265NGW", find the latest driver for Windows 11,10,8,x 64bit and Windows 7(32/64 bit) system.  
2. If your PC is offline, you need to install the driver from Mini CD in the package and install the correct driver. Please refer to the installation steps below.

### Install Driver on Linux System:

**Linux users can use the source code to install driver.**  
**Linux Kernels Driver Path:**  
Mini CD-WiFi Network Driver-Linux Driver-WF-AC8260  
Mini CD-WiFi Network Driver-Linux Driver-WF-AC8265

### Install Driver on Windows System:

**Step 1. Confirm PC System Version**  
1. User need to know its desktop PCs system version before installing driver for this PCIE WiFi Card, for example Windows 10 64bit ,Windows 11 64bit,Windows 8.1 64bit and Windows 7 32bit.

8

### Step 2. Open Mini CD and select WiFi Network Driver.

**Windows 11 64bit Windows 10 64bit driver path:**  
Mini CD-WiFi Network Driver-Windows Driver-Windows 10/11

**Windows 8.x 64 bit driver path:**  
Mini CD-WiFi Network Driver-Windows Driver-Windows 8.x

**Windows 7 64bit driver path:**  
Mini CD-WiFi Network Driver-Windows Driver-Windows 7 64bit

**Windows 7 32bit driver path:**  
Mini CD-WiFi Network Driver-Windows Driver-Windows 7 32bit

### Step 3. Install WiFi driver.

1. Double left-click the software and running software



WiFi Network Driver

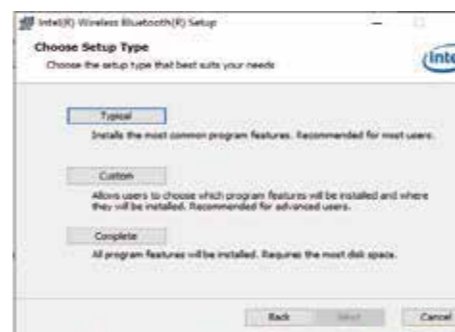
9

2. Accept license, click Install.

3. Accept license, click Install.



4. Choose setup type, click "Typical".



13

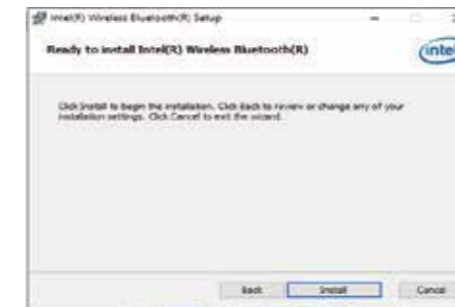


3. Waiting the installation.



10

5. Click "Install"

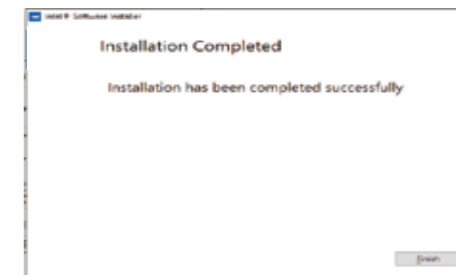


6. Click "Finish", WiFi audio driver installation done.



14

4. Installation done. Restart PC.



Step 4. Open Mini CD and select WiFi Audio Driver.

**Windows 11 64bit Windows 10 64bit driver path:**  
Mini CD-WiFi Audio Driver-Windows 10/11

**Windows 8.x 64 bit driver path:**  
Mini CD-WiFi Audio Driver-Windows 8.x

**Windows 7 64bit driver path:**  
Mini CD-WiFi Audio Driver-Windows 7 64bit

**Windows 7 32bit driver path:**  
Mini CD-WiFi Audio Driver-Windows 7 32bit

11

### Connect to WiFi Audio Device

**Connect to WiFi audio device:**  
1. Locate the task bar in the bottom right corner of your desktop.  
2. Click WiFi audio icon, follow windows reminder and connect it to the WiFi audio device.

### Connect to Internet

1. Locate the task bar in the bottom-right corner of desktop.  
2. Select the wireless icon as below on Windows 11/10/8.x 64bit system.



Windows11/10/8.x

15

3. Select WiFi signal around PCs, fill correct password and connect to it. Afterwards enjoy super speed internet.

Step 5. Install WiFi Audio driver.

1. Double left-click the software and running software

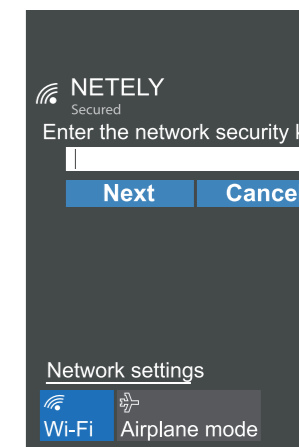


WiFi Audio Driver

2. Click "Next".



12



Windows11/10/8.x

### How to contact with us ?

**Latest Driver Download:** Visit Intel's site [www.intel.com](http://www.intel.com) and search "Wireless-AC 8260NGW" or "Wireless-AC 8265NGW", select the new released date code driver, download and install it on users PCs.  
**Tech-Support:** support@netely.com  
**Our Official Site:** [www.netely.com](http://www.netely.com)

16