

NETELY®

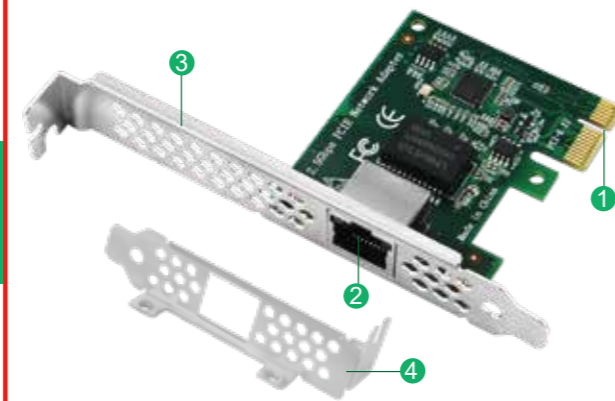
2.5Gbps PCIe Network Adapter

Model: I225T1

Site:www.netely.com Email:support@netely.com

1

PCIe-I225 PCIe to 2.5Gbps Ethernet Adapter



- 1. PCIe X1 Interface
- 2. RJ45 Interface
- 3. Full Height Bracket
- 4. Low Profile Bracket

2

Product Description

The I225T1 is a PCI Express 3.1 to 2500Mbps network card for desktop PCs online gaming,internet surfing and file downloading.It will allow users covert motherboard PCIe slot to RJ45 ports.The RJ45 ports supports IEEE 802.3 Ethernet interface for 2500BASE-T,1000BASE-T, 100BASE-TX, 10BASE-TE connections (IEEE 802.3,802.3u, 802.3ab).Supports wake up online and remote wake up.Supports auto-negotiate connection speed 10/100/1000/2500Mbps.It is based on Intel's I225V network controller will provide excellent performance on Windows 10 64bit and Windows 11 64bit desktop PCs.It comes with full height bracket and low profile bracket will compatible with standard size PCs and Slim PCs. Supports Intel's official site drivers.

Compatible System:

Windows:Need to install driver on Windows 10 64bit and Windows 11 64bit system,do not support other Windows systems.

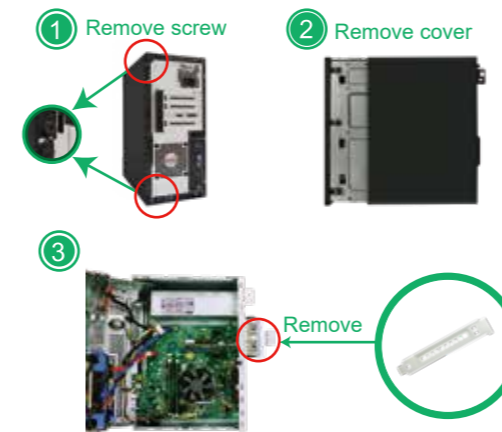
Package List:

1X PCIe-I225 1X User manual
1X Mount screw 1X Low profile bracket

3

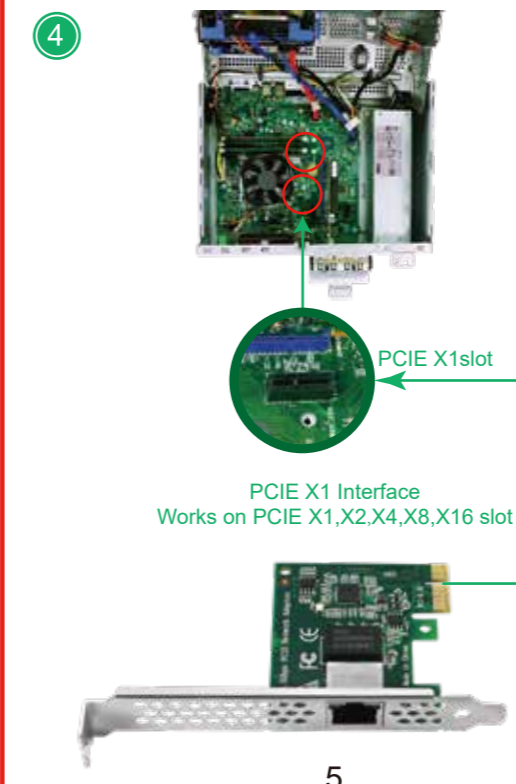
Add Network Card on Desktop PCs:

Step1,Switch OFF PC,unplug computer from main socket,unplug power cord and other connected peripherals.Remove the cover from computer case.



Step2,Find correct PCI Express slot from motherboard, insert PCIe network card into an empty PCI-E slot.

4



5

Step3,Reattach the computer cover,and put back removed peripherals,power on desktop computer.



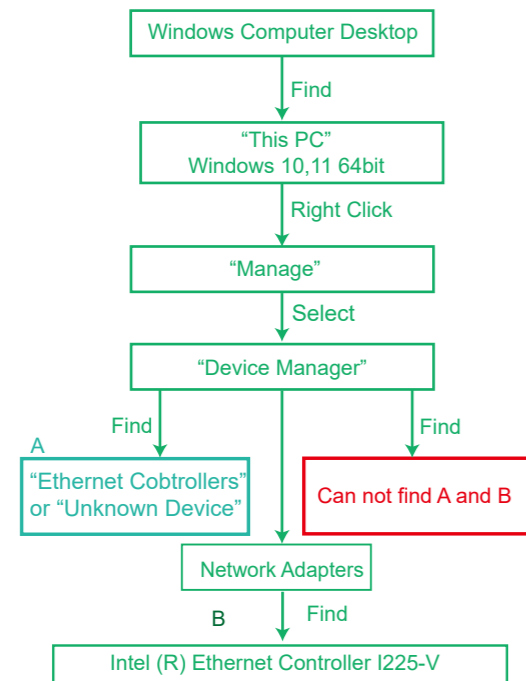
Added on network card RJ45 port

Check If Network Card Works on Computers:

1.Users can plug in RJ45 cable from routers check if PC can detect the network or not.If PC have detected the network,then no need to read the rest of this user manual.If PC can-not detect the network then go on read rest of user manual.

6

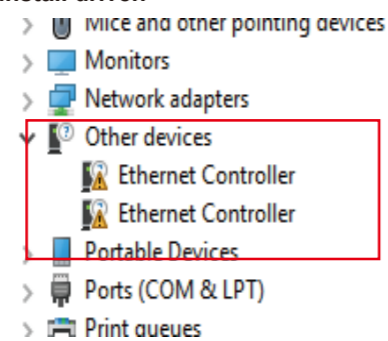
2.Find this added on network card hardware in Windows system "Device Manager" and check if system read it.



7

A,Means PCs find hardware need to install driver.
B,Means network card hardware correctly placed and system load driver already can use it now.
C,Means PCs can not find the added on network card and not load driver.1. Users need to re-plug network card on motherboard PCIe slot.2. Users better change to another active PCIe slot for this network card.

User Can check if the desktop PCs detsteded the hardware or not.Follow the path: This PC-Manage -Device Manager-Other Devices.Users can find the Ethernet Controller as below,then refer rest user manual install driver.

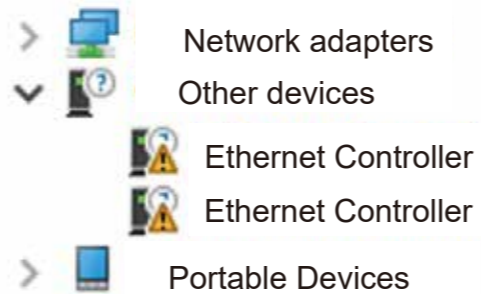


8

Install Driver on Desktop PCs:

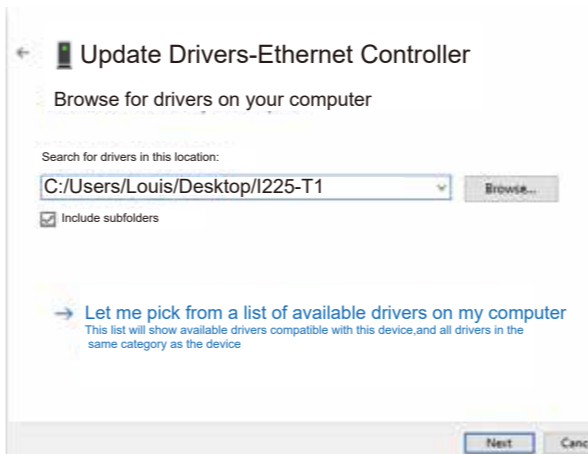
Step1,Visit www.netely.com-Bottom of homepage Click "Drivers"-Find model I225T1 download"I225T1" ZIP file and release it.Users can also download driver from chipset provider intel's site www.intel.com and search "I225V driver".

Step2,Select "Ethernet Controller",then right click the mice select "Update driver",then select "Browse my computer for drivers".



9

Step3,Select the released driver pack file folder "I225-T1" or select the driver Mini-CD. And click "Next". Windows system will search driver from selected file folder and load the driver automatically.



10

Update Drivers-Ethernet Controller
Installing drivers...

Step4,Windows systems will tell us driver has updated driver successfully. Click "Close". Also do these steps again with the other "Ethernet Controller".

Update Drivers-Intel Ethernet Controller I225V

Windows has successfully updated your drivers.

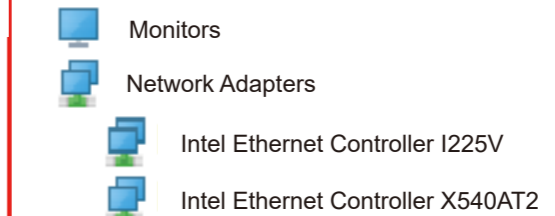
Windows has finished intalling the drivers for this device:

Intel Ethernet Controller I225V

Close

11

Step5,When installed drivers for "Ethernet Controller" Windows system will read this PCIe-I225 network card as "Intel Ethernet Controller I225V".Then users can enjoys 2.5Gbps network now.



12